

2019 7月度 45 F



Oil Pattern Distance: 45 Feet **Reverse Brush Drop:** 40 Feet **Oil Per Board:** 45 uL
Forward Oil Total: 11.025 mL **Reverse Oil Total:** 9.54 mL **Volume Oil Total:** 20.565 mL
Forward Boards Crossed: 245 Boards **Reverse Boards Crossed:** 212 Boards **Total Boards Crossed:** 457 Boards

	Start	Stop	Loads	Speed	Crossed	Start	End	Feet	T.Oil
1	5L	5R	1	14	31	0.0	0.0	0.0	1395
2	6L	6R	2	14	58	0.0	3.9	3.9	2610
3	7L	7R	2	14	54	3.9	7.8	3.9	2430
4	10L	10R	2	18	42	7.8	12.9	5.1	1890
5	12L	12R	2	22	34	12.9	19.1	6.2	1530
6	14L	14R	2	22	26	19.1	25.3	6.2	1170
7	2L	2R	0	26	0	25.3	45.0	19.7	0

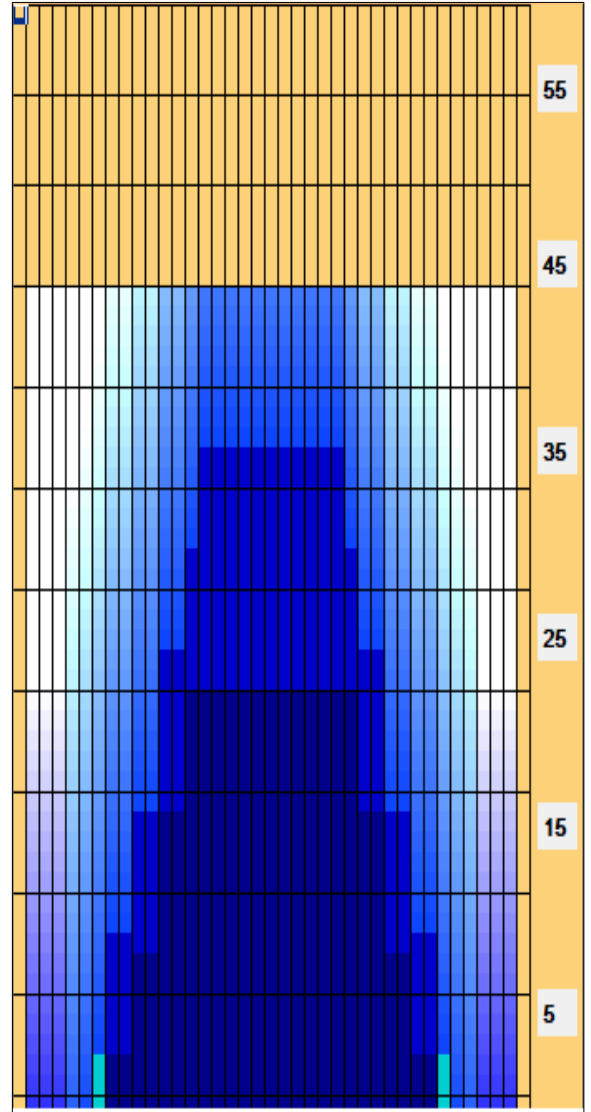
<< >> Forward Reverse More

	Start	Stop	Loads	Speed	Crossed	Start	End	Feet	T.Oil
1	2L	2R	0	30	0	45.0	37.0	-8.0	0
2	15L	15R	2	18	22	37.0	31.9	-5.1	990
3	14L	14R	2	18	26	31.9	26.8	-5.1	1170
4	12L	12R	3	18	51	26.8	19.2	-7.6	2295
5	10L	10R	3	14	63	19.2	13.3	-5.9	2835
6	8L	8R	2	14	50	13.3	9.4	-3.9	2250
7	2L	2R	0	10	0	9.4	0.0	-9.4	0

<< >> Forward Reverse More

Conditioner:
 Type In or Select One
 TransferType:
 Type In or Select One

- Forward
- Reverse
- Combined
- Buff



Item Description	3L-7L:18L-18R Outside Track:Middle	8L-12L:18L-18R Middle Track:Middle	13L-17L:18L-18R Inside Track:Middle	18L-18R:17R-13R Middle: Inside Track	18L-18R:12R-8R Middle:Middle Track	18L-18R:7R-3R Middle:Outside Track
Track Zone Ratio	12.78	2.09	1.07	1.07	2.09	12.78

